



ENAYA  
RESIDENCES

📍 Jumeirah Village Triangle

# Welcome to Enaya Residences

Enaya Residences is a name synonymous with elegance, innovation, and excellence. Known for our commitment to quality and luxurious living, Enaya Residences proudly presents its latest project on Sheikh Mohammed Bin Zayed Road, Dubai. Our heritage in crafting superior living spaces is now extended to the vibrant heart of Dubai, offering a lifestyle that combines sophistication, comfort, and modernity. The apartments at Enaya Residences are designed to provide extravagant skyline views, state-of-the-art amenities, and an unwavering dedication to your comfort.



# Dubai

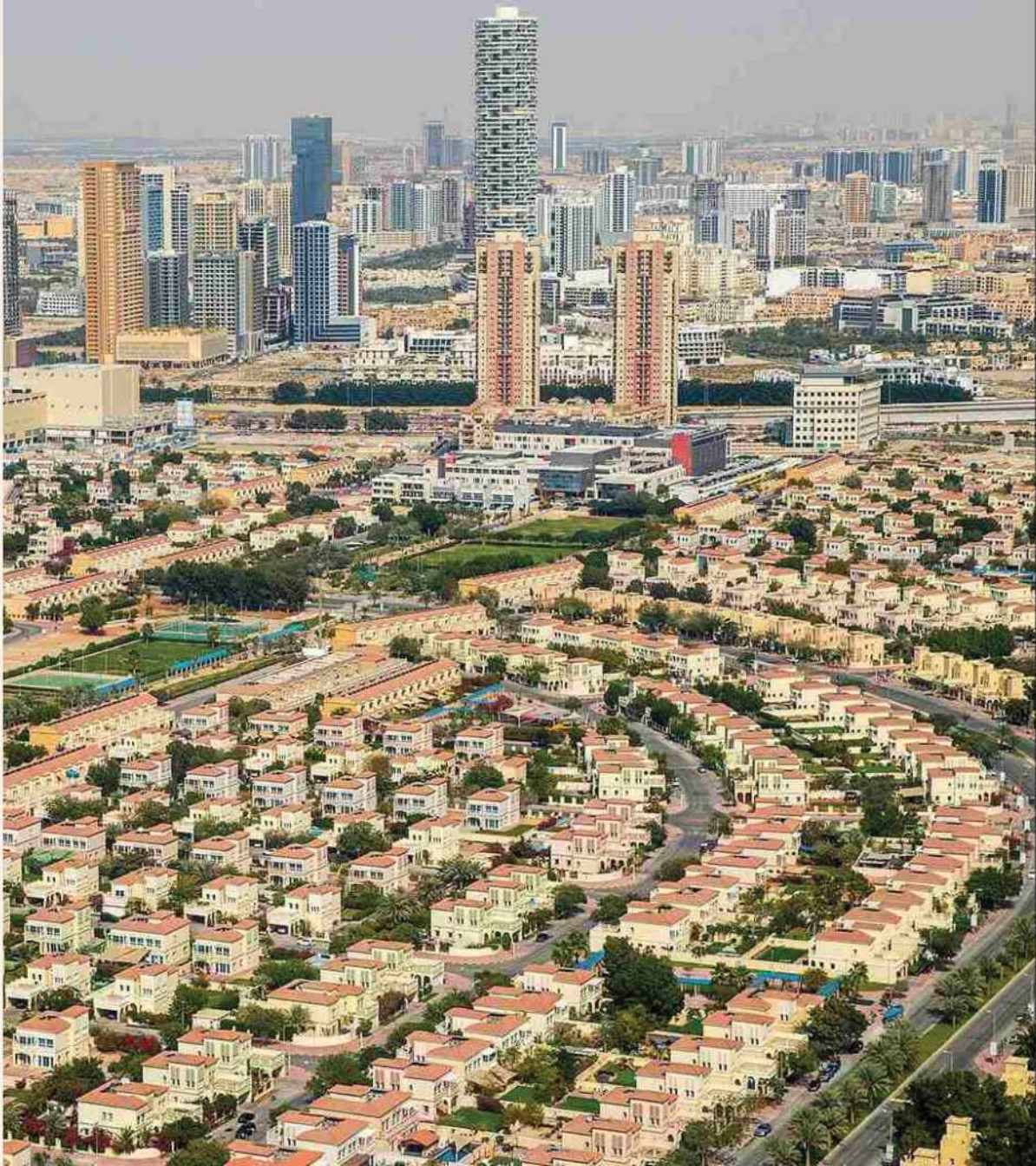
Dubai is a city that is as fascinating as it is beautiful, offering a unique blend of modernity and tradition that makes it stand out from other cities in the world. With its towering skyscrapers, luxurious shopping malls, and world-renowned attractions, Dubai is an iconic destination for both business and leisure. Its strategic location, advanced infrastructure, and business-friendly policies make it a top choice for global investors and entrepreneurs. Additionally, Dubai's vibrant cultural scene, stunning beaches, and year-round sunshine make it a popular choice for those looking for a luxury lifestyle. The real estate market in Dubai is booming, with a wide range of properties available to suit every taste and budget. Thanks to its visionary, highly competent government and strong, sophisticated economy, Dubai is poised to stake its claim as one of the top global cities to both live and invest in.



# Jumeirah Village Triangle

Jumeirah Village Triangle (JVT) is a prime residential community nestled in the heart of Dubai, offering a unique combination of convenience and luxury. This vibrant community is known for its peaceful and tranquil surroundings, plentiful green spaces, and stunning architecture, which creates a peaceful haven in the midst of the bustling city.

JVT boasts a variety of housing options, including spacious villas, stylish townhouses, and modern apartments, all designed to meet the needs of different lifestyles and preferences. JVT is also home to a host of amenities, including parks, playgrounds, ensuring that residents have everything they need within easy reach.



## The Post - Handover Payment Plan

Booking Amount

5%

30 Days of Booking

15%

Within 120 Days

10%

Within 300 Days

10%

On Completion

10%

Within 480 Days

10%

40 Months Post-Handover

1%

Anticipated Completion in Q4 2026

# The Post – Handover Payment Plan

Booking Amount

5%

30 Days of Booking

15%

Within 120 Days

10%

On Completion

20%

25% Months Post Hand Over

2%

Anticipated Completion in Q4 2026

# Prime Location The Heart of Dubai

Located on Jumeirah Village Triangle, Enaya Residences offers exceptional connectivity and strategic advantage within Dubai’s urban landscape. Just minutes away from key business districts, shopping centers, and cultural landmarks, our residence ensures you are at the center of all the action. Experience the best of urban living in a posh locality, well-connected to all the essential hubs of Dubai.



ENAYA  
RESIDENCES



2 Minutes

Sheikh Mohammed Bin Zayed Rd.

15 Minutes

Mediclinic Hospital

24 Minutes

Burj Al Arab

4 Minutes

Al Khail Road

19 Minutes

Mall of the Emirates

25 Minutes

Dubai Mall

8 Minutes

Gardens Metro Station

20 Minutes

Palm Jumeirah

30 Minutes

Al Maktoum Int’l Airport

15 Minutes

Dubai Marina

23 Minutes

Business Bay

30 Minutes

Dubai Int’l Airport



Jumeirah Village Triangle



Luxurious Reception and Lift Lobby



Drawing Room



Elegant  
Living Spaces



Spacious  
Bedrooms



Modern  
Bathrooms



State-of-the Art  
Kitchen



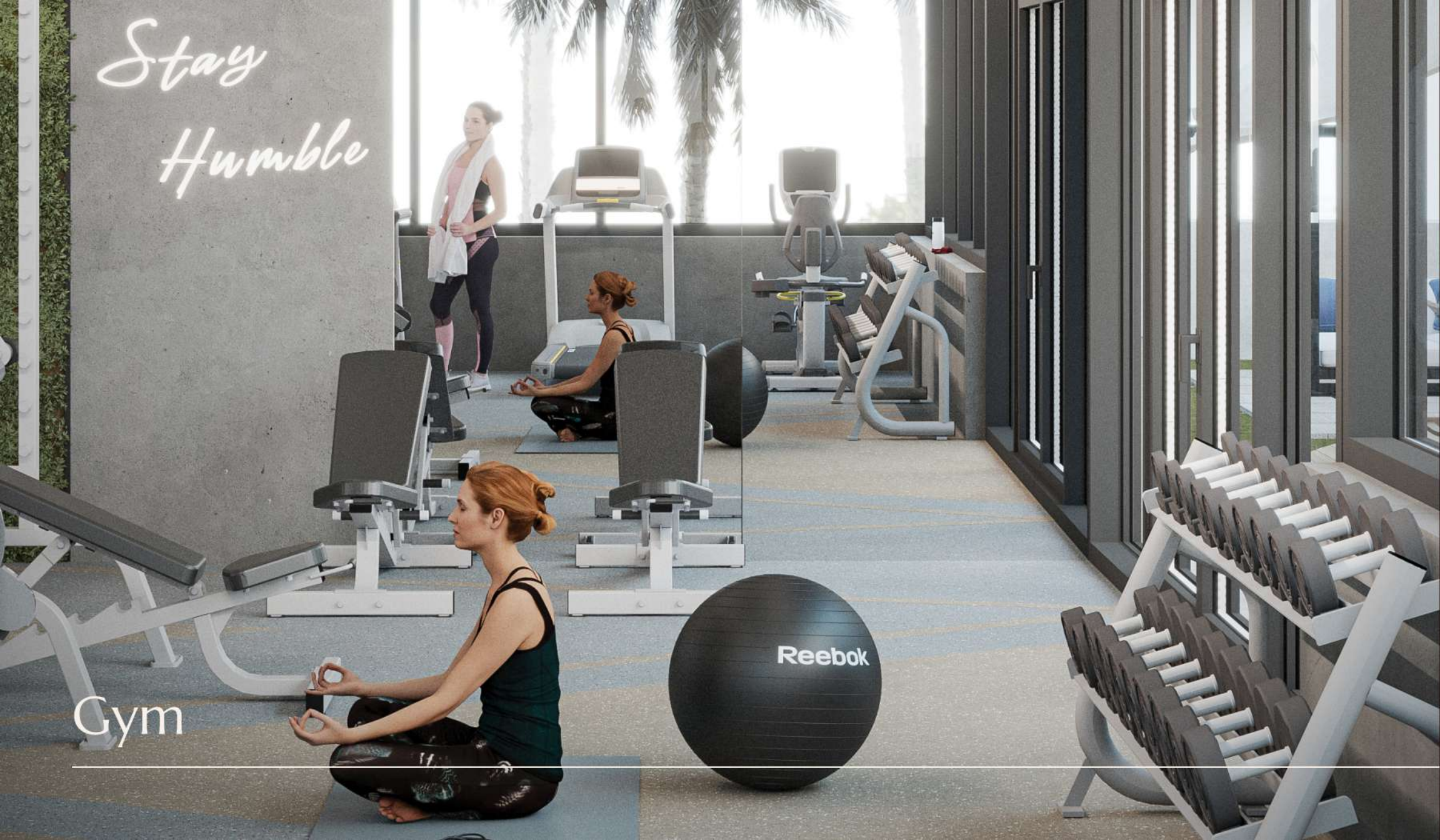
Stylish  
Dining Area



Smart  
Home Automation



Expansive  
Terraces





Badminton Court



Landscaping



Kids  
Play Area



# Typical Floor Plan

Units 101, 201, 301, 401, 501



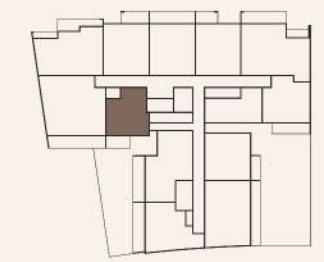
## ONE BEDROOM

Type	1 Bed
Size (Sqft.)	694.7
Int. Area	597.4
Areas presented in square feet	

### Level 1-5

	Roof
501	05
401	04
301	03
201	02
101	01
	Ground
	Basement

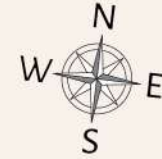
### Keyplan



\*The images exhibited for illustration purpose only

# Typical Floor Plan

Units 102, 202, 302, 402, 502



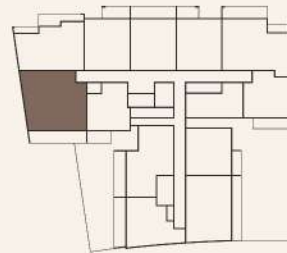
## TWO BEDROOM

Type	2 Bed
Size (Sqft.)	1373.91
Int. Area	1145.06
Areas presented in square feet	

### Level 1-5

	Roof
502	05
402	04
302	03
202	02
102	01
	Ground
	Basement

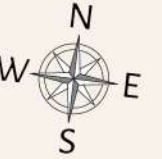
### Keyplan



\*The images exhibited for illustration purpose only

# Typical Floor Plan

Units 103, 203, 303



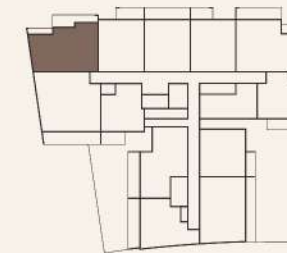
## TWO BEDROOM

Type	2 Bed
Size (Sqft.)	1141.51
Int. Area	947.98
Areas presented in square feet	

### Level 1-3

	Roof
	05
	04
303	03
203	02
103	01
	Ground
	Basement

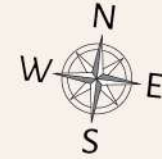
### Keyplan



\*The images exhibited for illustration purpose only

# Typical Floor Plan

Units 104, 204, 304



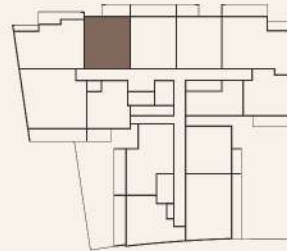
## ONE + STUDY BEDROOM

Type	1+St Bed
Size (Sqft.)	853.69
Int. Area	742.71
Areas presented in square feet	

### Level 1-3

	Roof
	05
	04
304	03
204	02
104	01
	Ground
	Basement

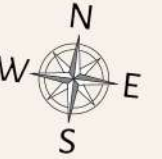
### Keyplan



\*The images exhibited for illustration purpose only

# Typical Floor Plan

Units 105, 205, 305



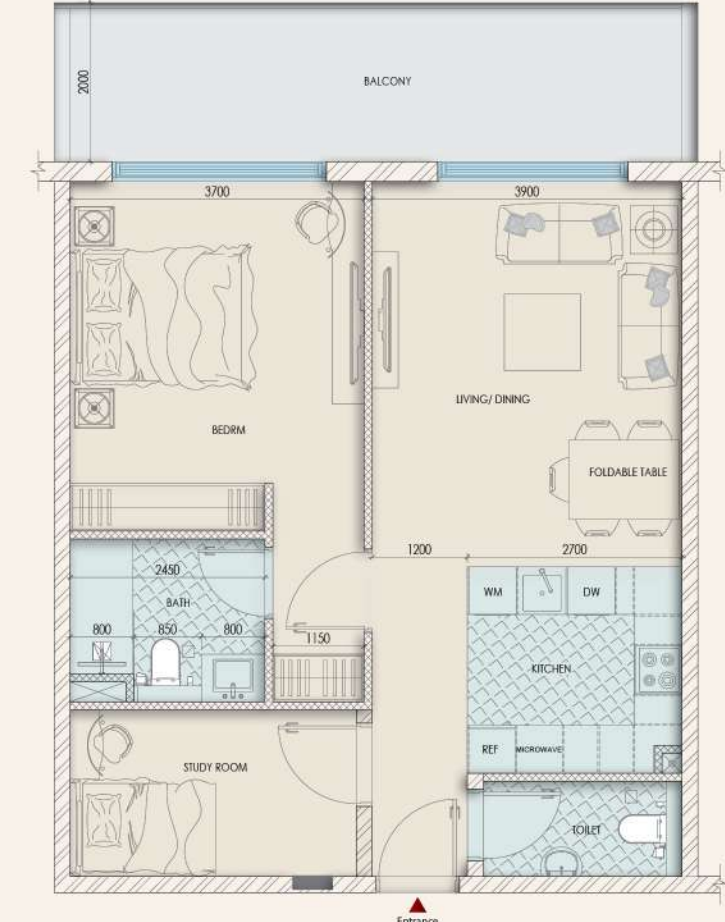
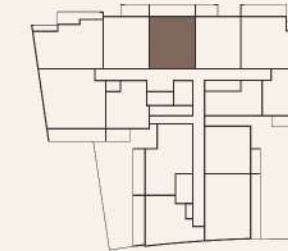
## ONE + STUDY BEDROOM

Type	1+St Bed
Size (Sqft.)	938.29
Int. Area	760.04
Areas presented in square feet	

### Level 1-3

	Roof
	05
	04
305	03
205	02
105	01
	Ground
	Basement

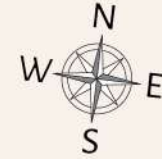
### Keyplan



\*The images exhibited for illustration purpose only

# Typical Floor Plan

Units 106, 206, 306



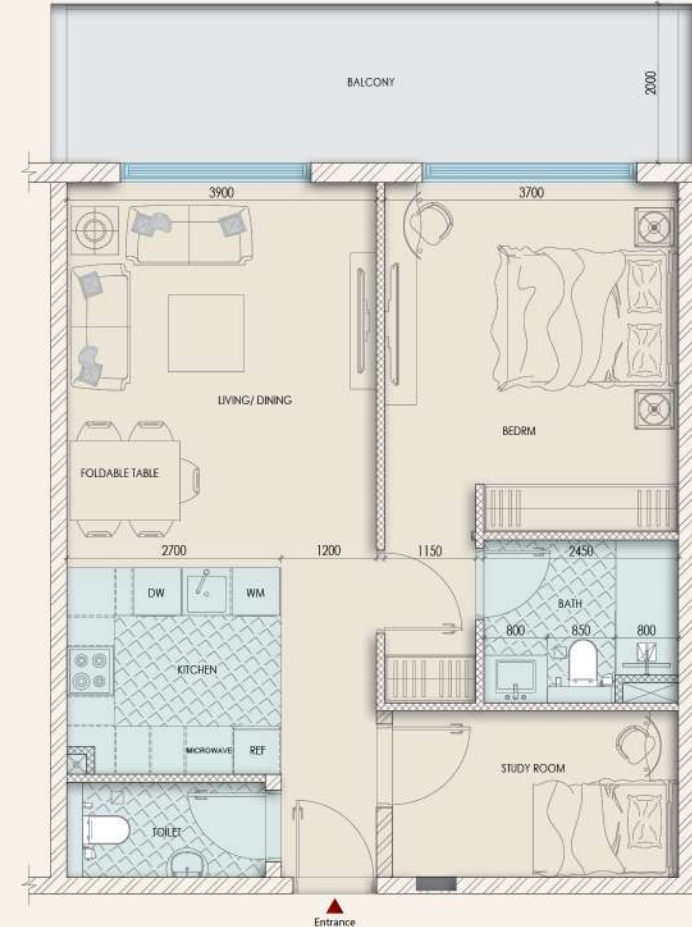
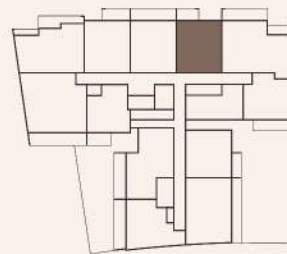
## ONE + STUDY BEDROOM

Type	1+St Bed
Size (Sqft.)	847.66
Int. Area	759.29
Areas presented in square feet	

### Level 1-3

	Roof
	05
	04
306	03
206	02
106	01
	Ground
	Basement

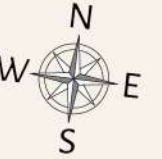
### Keyplan



\*The images exhibited for illustration purpose only

# Typical Floor Plan

Units 107, 207, 307



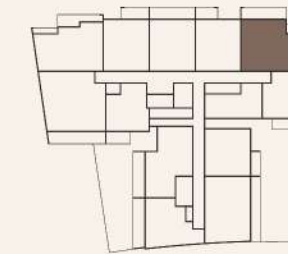
## TWO BEDROOM

Type	2 Bed
Size (Sqft.)	1330.42
Int. Area	1081.34
Areas presented in square feet	

### Level 1-3

	Roof
	05
	04
307	03
207	02
107	01
	Ground
	Basement

### Keyplan

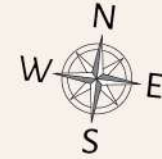


\*The images exhibited for illustration purpose only



# Typical Floor Plan

Units 111, 211, 311, 410, 510



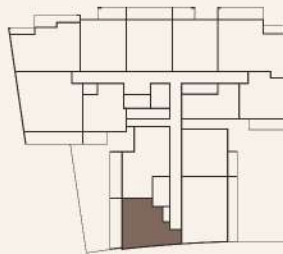
## ONE + STUDY BEDROOM

Type	1+St. Bed
Size (Sqft.)	917.52
Int. Area	717.74
Areas presented in square feet	

### Level 1-5

	Roof
510	05
410	04
311	03
211	02
111	01
	Ground
	Basement

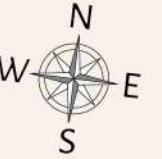
### Keyplan



\*The images exhibited for illustration purpose only

# Typical Floor Plan

Units 112, 212, 312, 411, 511



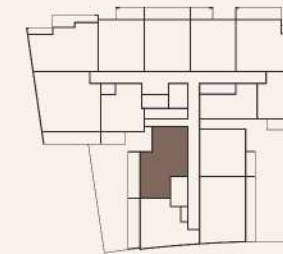
## TWO BEDROOM

Type	2 Bed
Size (Sqft.)	1049.8
Int. Area	864.56
Areas presented in square feet	

### Level 1-5

	Roof
511	05
411	04
312	03
212	02
112	01
	Ground
	Basement

### Keyplan



\*The images exhibited for illustration purpose only

# Typical Floor Plan

Units 208, 308, 407, 507

## TWO BEDROOM



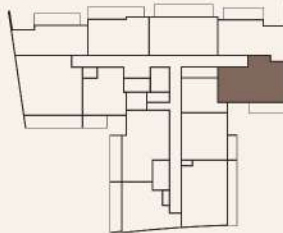
Type	2 Bed
Size (Sqft.)	1035.49
Int. Area	900.19
Areas presented in square feet	



### Level 2-5

	Roof
507	05
407	04
308	03
208	02
	01
	Ground
	Basement

### Keyplan



\*The images exhibited for illustration purpose only

# Typical Floor Plan

Units 403

## ONE + STUDY BEDROOM



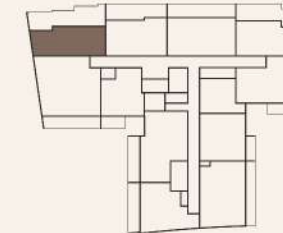
Type	1+St. Bed
Size (Sqft.)	1143.77
Int. Area	683.08
Areas presented in square feet	



### Level 4

	Roof
	05
403	04
	03
	02
	01
	Ground
	Basement

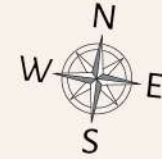
### Keyplan



\*The images exhibited for illustration purpose only

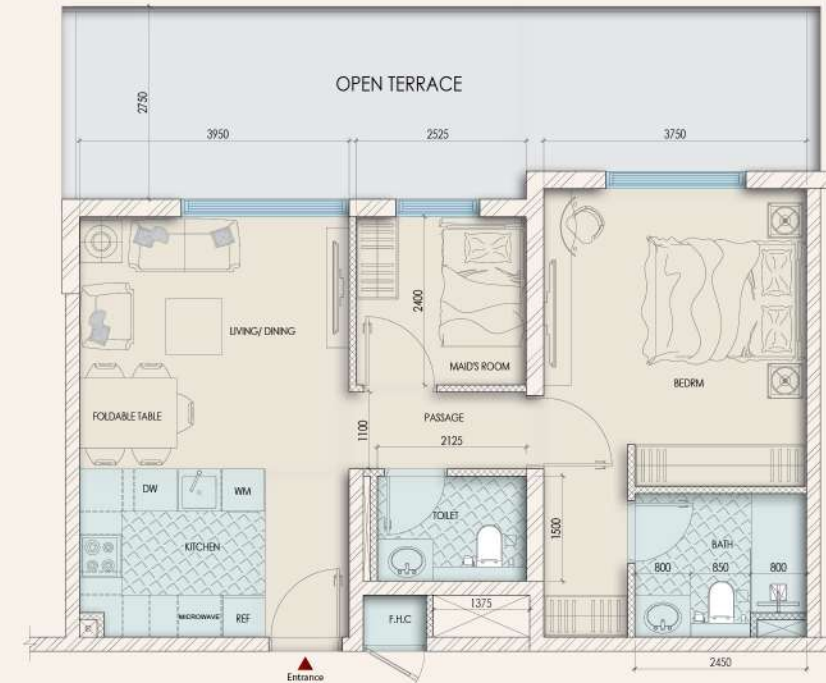
# Typical Floor Plan

Unit 404

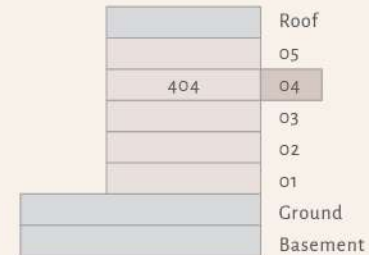


ONE + STUDY BEDROOM

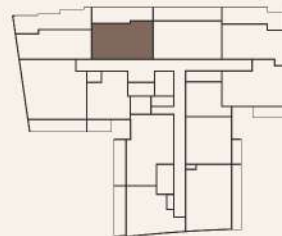
Type	1+St. Bed
Size (Sqft.)	1005.56
Int. Area	696.53
Areas presented in square feet	



Level 4



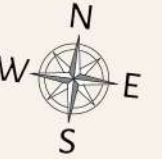
Keyplan



\*The images exhibited for illustration purpose only

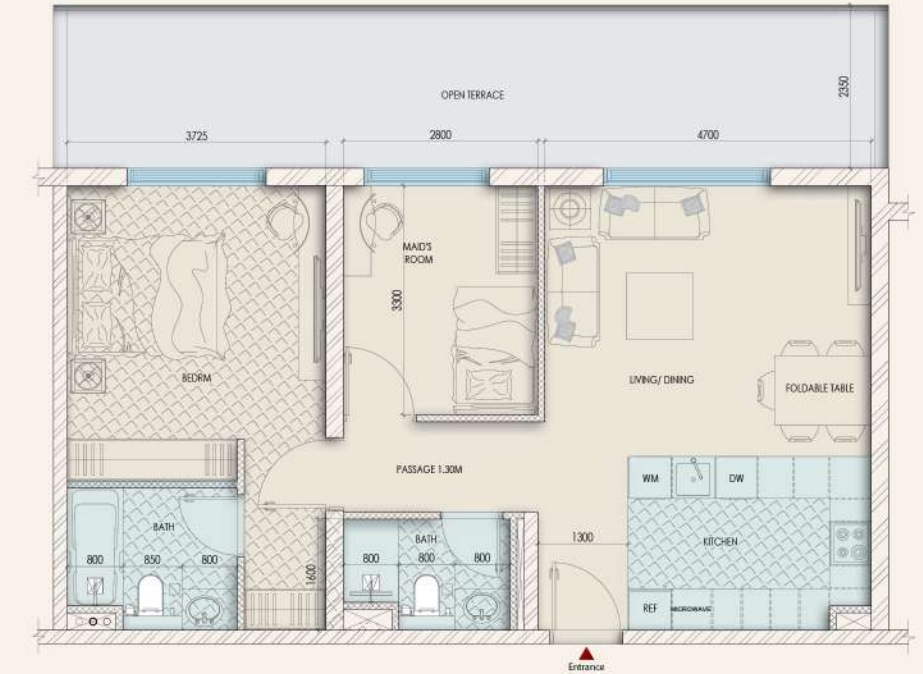
# Typical Floor Plan

Unit 405

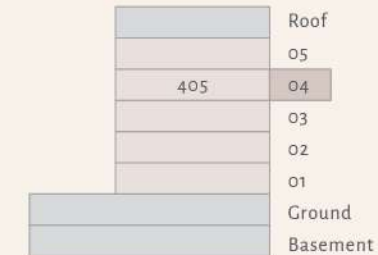


ONE + STUDY BEDROOM

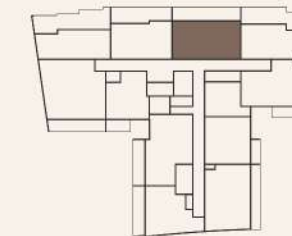
Type	1+St. Bed
Size (Sqft.)	1139.79
Int. Area	828.07
Areas presented in square feet	



Level 4



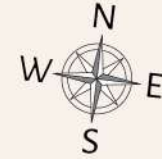
Keyplan



\*The images exhibited for illustration purpose only

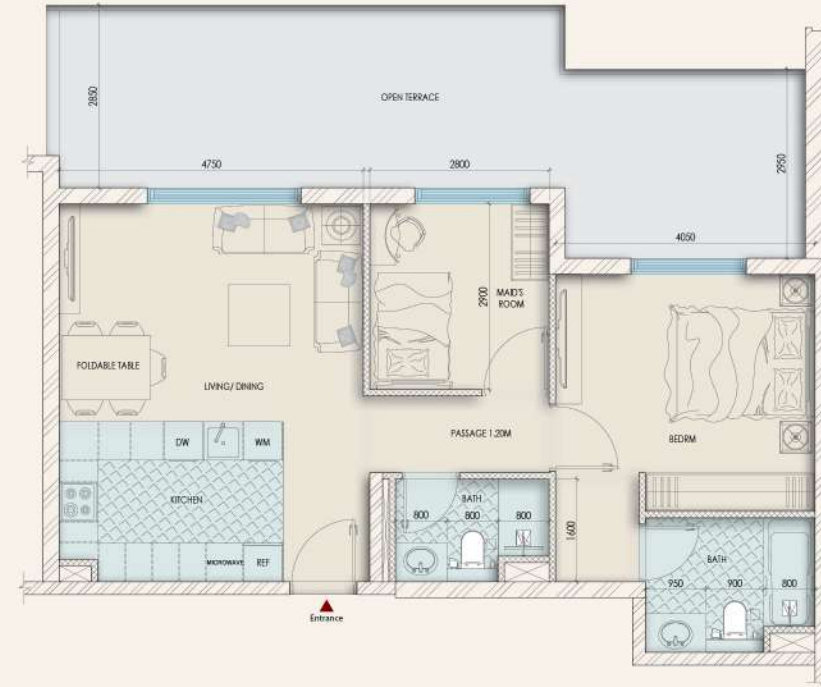
# Typical Floor Plan

Unit 406

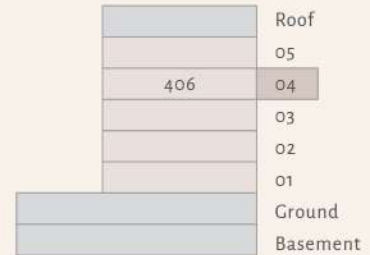


## ONE + STUDY BEDROOM

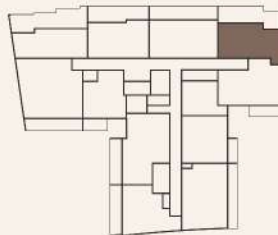
Type	1+St. Bed
Size (Sqft.)	1151.74
Int. Area	766.5
Areas presented in square feet	



### Level 4



### Keyplan



\*The images exhibited for illustration purpose only

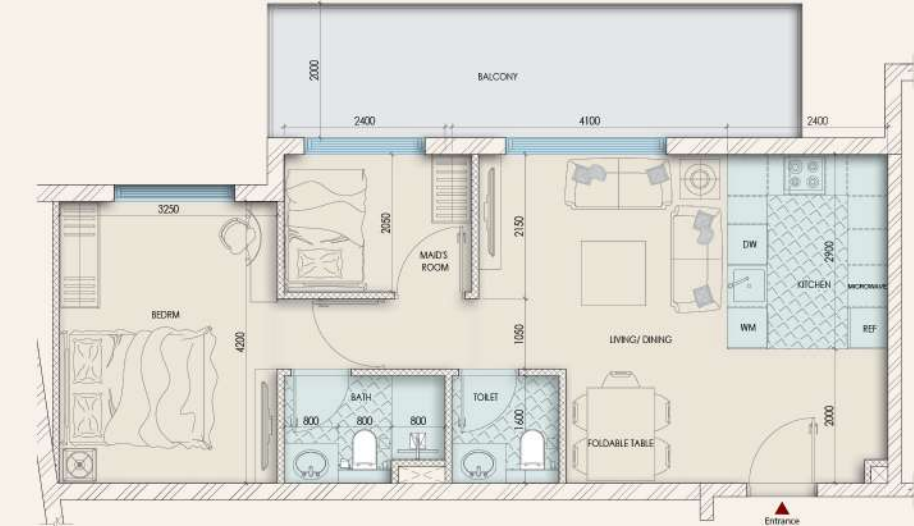
# Typical Floor Plan

Unit 503

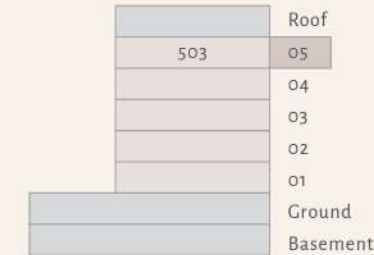


## ONE + STUDY BEDROOM

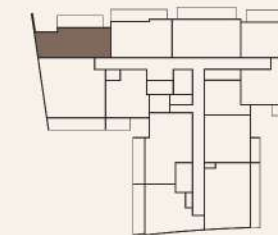
Type	1+St. Bed
Size (Sqft.)	862.62
Int. Area	683.08
Areas presented in square feet	



### Level 5



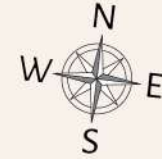
### Keyplan



\*The images exhibited for illustration purpose only

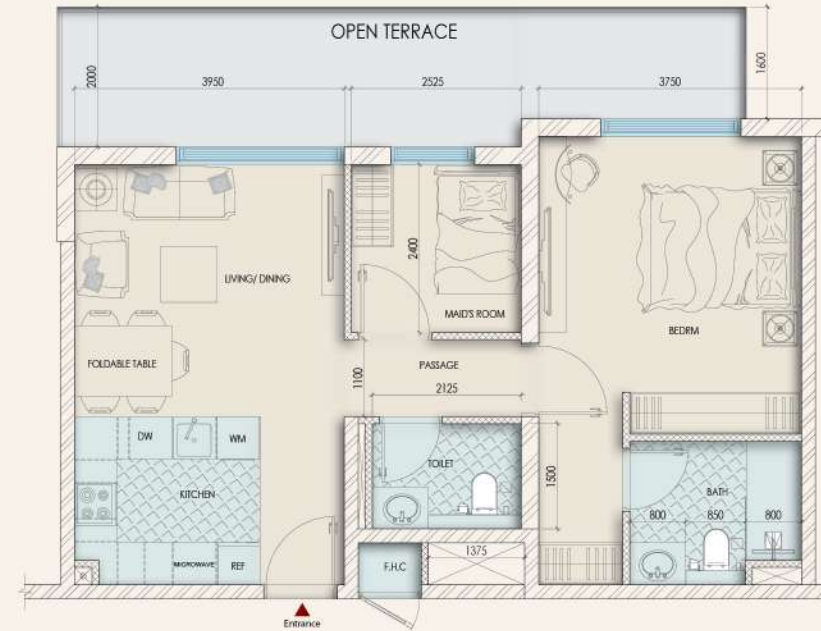
# Typical Floor Plan

Unit 504

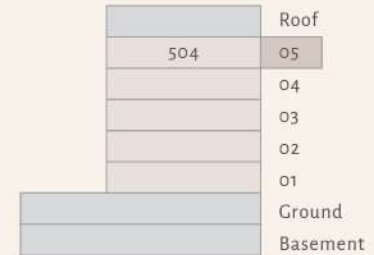


ONE + STUDY BEDROOM

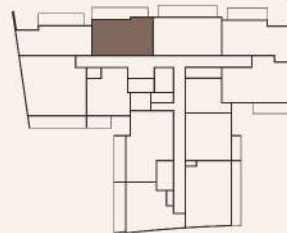
Type	1+St. Bed
Size (Sqft.)	904.71
Int. Area	695.99
Areas presented in square feet	



Level 5



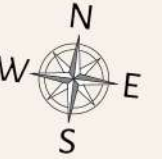
Keyplan



\*The images exhibited for illustration purpose only

# Typical Floor Plan

Unit 505

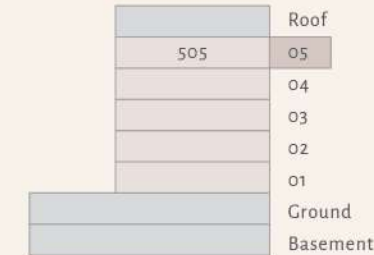


ONE + STUDY BEDROOM

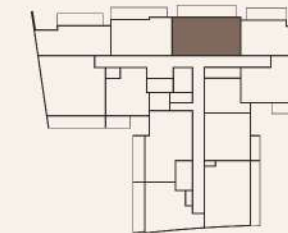
Type	1+St. Bed
Size (Sqft.)	1056.15
Int. Area	827.64
Areas presented in square feet	



Level 5



Keyplan



\*The images exhibited for illustration purpose only

# Typical Floor Plan

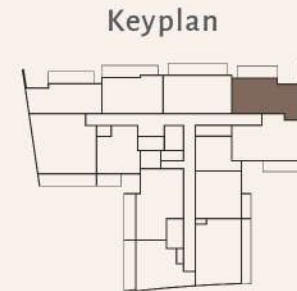
Unit 506



## ONE + STUDY BEDROOM

Type	1+St. Bed
Size (Sqft.)	924.62
Int. Area	765.85
Areas presented in square feet	

Level 5	
	Roof
506	05
	04
	03
	02
	01
	Ground
	Basement



\*The images exhibited for illustration purpose only



# Our Projects

## Enaya Residences

Jumeirah Village Triangle



## Trafford Residences

Dubai South

